

C-Fe-Nb (Carbon-Iron-Niobium)

V. Raghavan

The update of this ternary system by [2003Rag] included a review of the data on the solubility of NbC in austenite, two computed isothermal sections at 1200 and 1000 °C from [1990Hua] and a computed liquidus projection for Fe-rich alloys also from [1990Hua]. Recently, [2008Had] reported an experimental determination of the liquidus projection for Fe-rich alloys.

Binary Systems

The C-Fe phase diagram [1992Oka] is in the form of a double diagram, corresponding to the metastable equilibrium with Fe₃C (cementite) or the stable equilibrium with graphite. The face-centered cubic (fcc) solid solution γ (austenite) forms peritectically from body-centered cubic (bcc) δ and liquid. The eutectic reaction around 1150 °C yields austenite and cementite (or graphite). The eutectoid decomposition around 730 °C yields ferrite (α) and cementite (or graphite). The C-Nb phase diagram [Massalski2] has

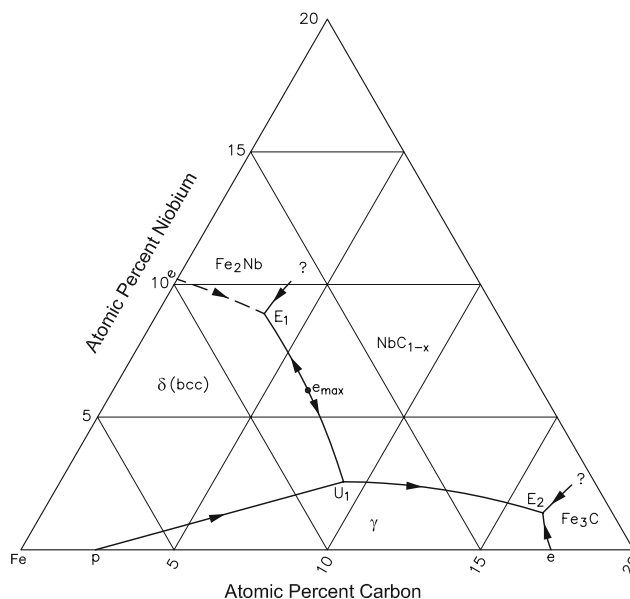


Fig. 1 C-Fe-Nb liquidus projection for Fe-rich alloys [2008Had]

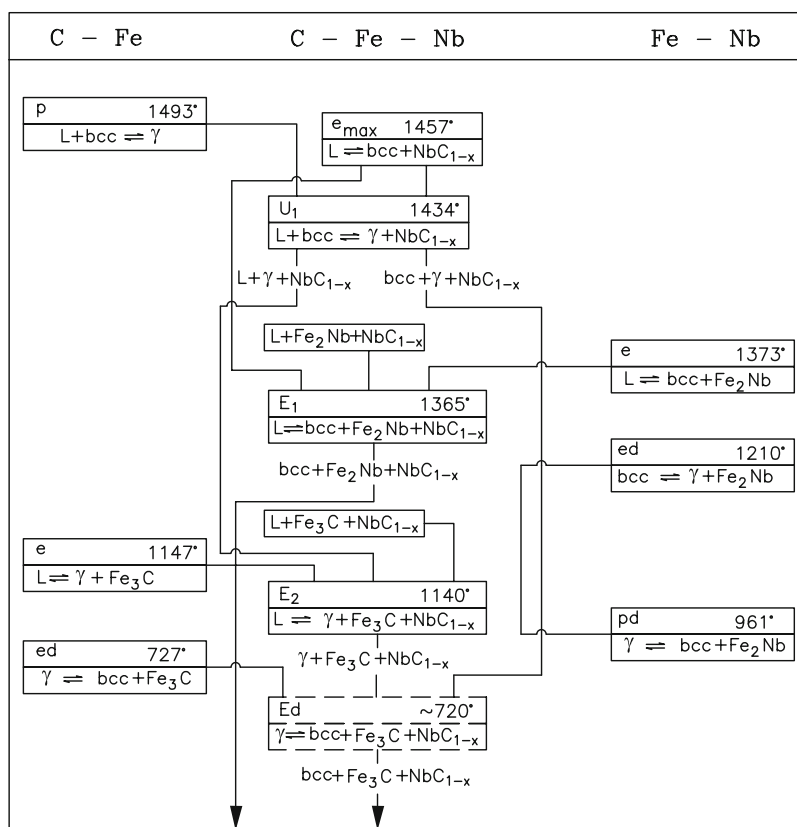


Fig. 2 C-Fe-Nb reaction sequence for Fe-rich alloys

two established intermediate phases: Nb₂C (hexagonal) and NbC (B1, NaCl-type cubic). NbC has a homogeneity range on the C-deficient side and is denoted also as NbC_{1-x} or NbC_{0.87}. The Fe-Nb phase diagram [1993Bej] shows two intermediate phases: Fe₂Nb (C14, MgZn₂-type hexagonal) and Fe₇Nb₆ (D8₅, Fe₇W₆-type rhombohedral).

Ternary Phase Equilibria

With starting metals of 99.98% Fe, 99.8% Ni and graphite, [2008Had] arc-melted under Ar atm about fifteen Fe-rich alloys, with Nb contents up to 16.2 at.% and C contents up to 16.1 at.%. The phase equilibria were studied with optical microscopy, a scanning electron microscope equipped with an energy dispersive x-ray analyzer, and differential thermal analysis at a cooling rate of 10 °C/min. The liquidus projection for cementite equilibrium in Fe-rich alloys constructed by [2008Had] is redrawn in Fig. 1. The primary phases of crystallization are: δ, γ, Fe₂Nb, NbC_{1-x}, and Fe₃C. On the univariant line L + δ + NbC_{1-x}, a eutectic maximum e_{max} occurs at ~1457 °C. Near the Fe-Nb side,

the solidification is complete through the ternary eutectic reaction E₁ at 1365 °C. Near the Fe-C side, solidification is complete through the reaction E₂ at 1140 °C. A reaction sequence for Fe-rich alloys is shown in Fig. 2. The solid-state invariant reaction, Ed is placed in a broken box in Fig. 2 to indicate that it has no experimental confirmation.

References

- 1990Hua:** W. Huang, A Thermodynamic Evaluation of the Fe-Nb-C System, *Z. Metallkd.*, 1990, **81**(6), p 397-404
- 1992Oka:** H. Okamoto, The C-Fe (Carbon-Iron) System, *J. Phase Equilib.*, 1992, **13**(5), p 543-565
- 1993Bej:** J.M.Z. Bejarano, S. Gama, C.A. Rebeiro, and G. Effenberg, The Iron-Niobium Phase Diagram, *Z. Metallkd.*, 1993, **84**(3), p 160-164
- 2003Rag:** V. Raghavan, C-Fe-Nb (Carbon-Iron-Niobium), *J. Phase Equilib.*, 2003, **24**(1), p 57-61
- 2008Had:** F. Haddad, S.E. Amara, and R. Kesri, Liquidus Surface Projection of the Fe-Nb-C System in the Iron-Rich Corner, *Metall. Mater. Trans. A*, 2008, **39**, p 1026-1033